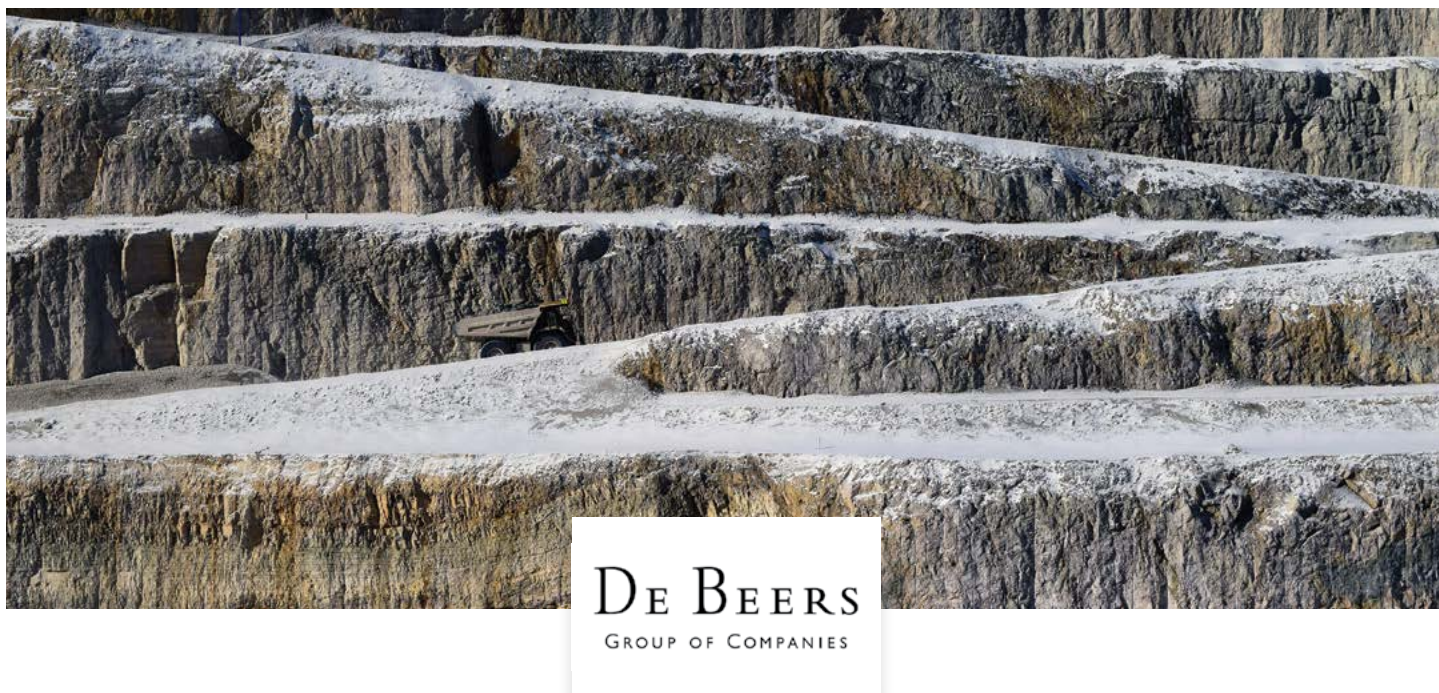


TSM Performance by Company

De Beers Canada Inc.



De Beers has three major assets in Canada: the Victor Mine, the Snap Lake Mine and the Gahcho Kué Mine. The Victor Mine, Ontario's first and only diamond mine, is located 90 kilometres west of the Attawapiskat First Nation in northeastern Ontario. The Snap Lake Mine, located approximately 200 kilometres northeast of Yellowknife in the Northwest Territories, was Canada's first fully underground diamond mine. In December 2015, the mine was placed into care and maintenance due to a downturn in market conditions. De Beers is also the majority partner and operator of the Gahcho Kué Mine, which began production in August 2016, and is located 280 kilometres northeast of Yellowknife.

De Beers Canada's operations are committed to sustainable development. The Gahcho Kué, Snap Lake and Victor mines have a combined total of 14 impact benefit agreements with First Nations and Métis communities in Canada. The operating mines, Gahcho Kué and Victor, maintain environmental management systems that have been certified to ISO 14000. The Victor Mine is also certified to the safety and health OHSAS 18001 standard. Gahcho Kué plans to seek OHSAS 18001 certification in the near future.

De Beers Canada is a member of the Canadian Diamond Code of Conduct and Jewellers Vigilance Canada. As part of the larger De Beers Group of Companies, De Beers Canada is also a supporter, participant or signatory of the Global Reporting Initiative, the Responsible Jewellery Council standards, the United Nations Global Compact, the Extractive Industries Transparency Initiative and the Kimberley Process.

The following is a summary of TSM results for De Beers Canada in 2016.

CRISIS MANAGEMENT AND COMMUNICATIONS PLANNING

Crisis management plans for the corporate office and the Victor Mine conform to all TSM performance requirements, as will Gahcho Kué's plan in the near future.

ENERGY USE AND GHG EMISSIONS MANAGEMENT

The Victor Mine has a mature energy management system, with two out of three indicators assessed at a Level AA. The energy use and GHG emissions reporting system was assessed at a Level A.

Gahcho Kué is in the process of developing an energy management system.

TAILINGS MANAGEMENT

The Victor Mine maintained a Level AAA for three of the tailings management performance indicators, except for Indicator 4, which was externally assessed at a Level B, and Indicator 5 which was assessed at a Level A.

ABORIGINAL AND COMMUNITY OUTREACH

The Victor Mine maintained either a Level AA or AAA for all of the Aboriginal and community outreach performance indicators.

BIODIVERSITY CONSERVATION MANAGEMENT

The Victor Mine improved and was assessed at Level AA or above. The mine has extensive environmental monitoring programs, which were already in place for various permits, environmental assessment follow-up programs and research initiatives. Improvements focused on increasing communication with communities of interest and making information publicly available about the mine's biodiversity conservation performance.

SAFETY AND HEALTH

The safety and health management system at Victor Mine was certified in 2016 to OHSAS 18001. The mine achieved externally verified results of Level AAA for all indicators under this protocol.

🔗 For more information, please visit www.debeersgroup.com/canada/en/



De Beers' Victor Mine, near Attawapiskat First Nation in northeastern Ontario.



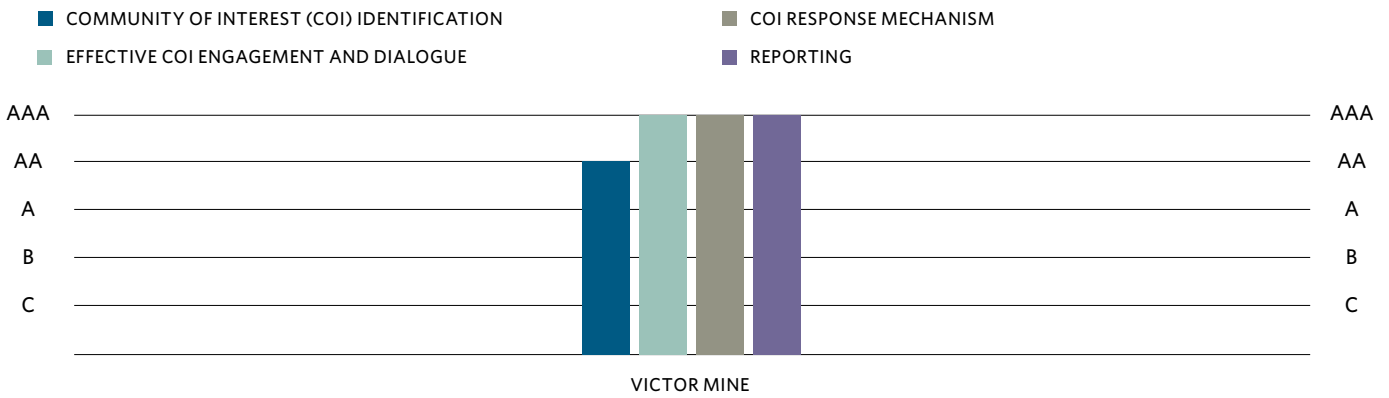
Externally
Verified Results

2016 TSM Results De Beers Canada Inc.

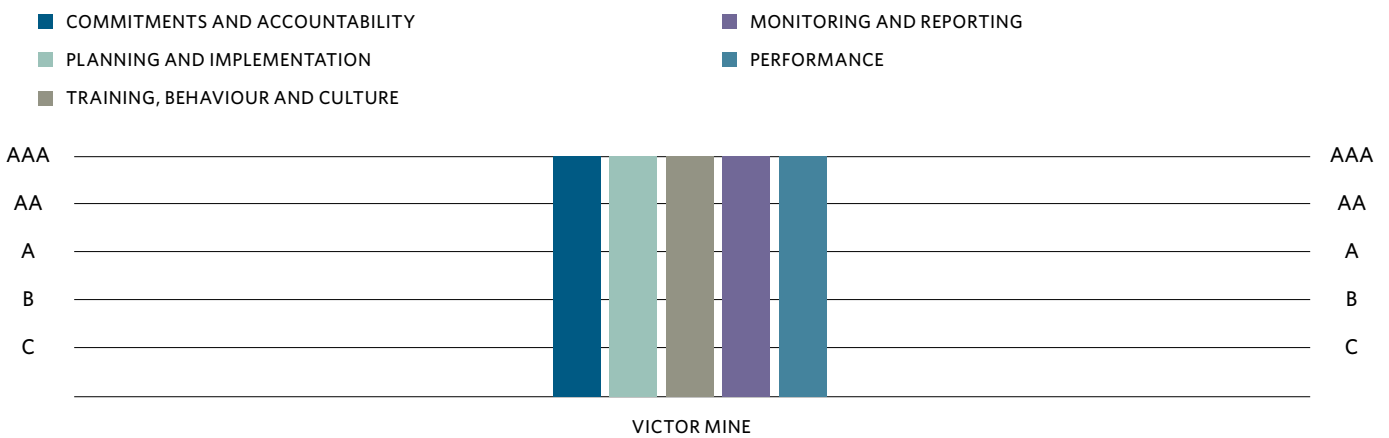
Crisis Management and Communications Planning Assessment

FACILITY	PREPAREDNESS	REVIEW	TRAINING
DE BEERS CANADA INC.	✓	✓	✓
VICTOR MINE	✓	✓	✓

Aboriginal and Community Outreach Assessment



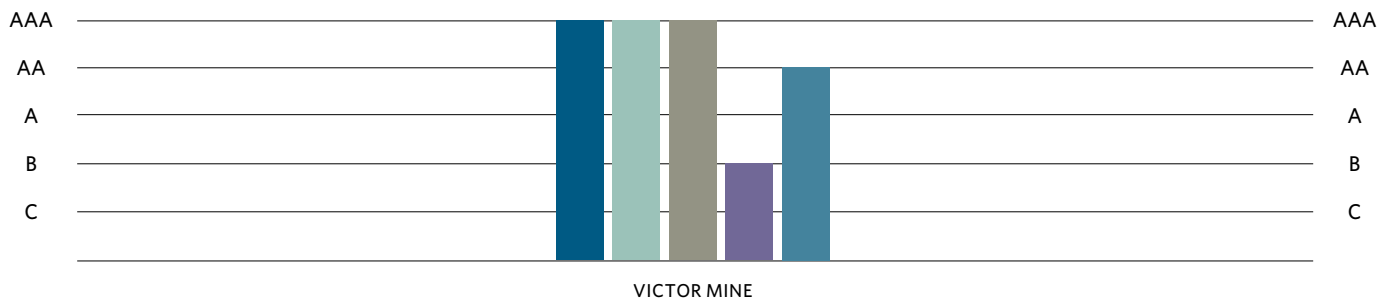
Safety and Health Assessment



Tailings Management Assessment

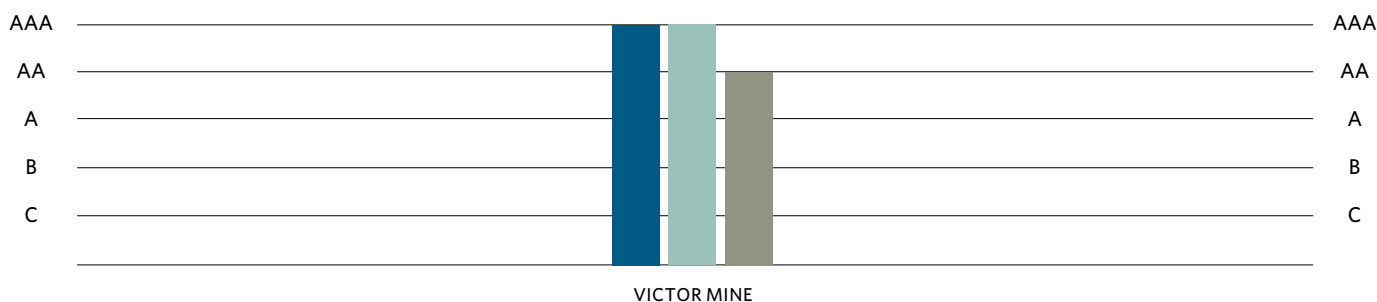
Externally
Verified Results

- TAILINGS MANAGEMENT POLICY AND COMMITMENT
- ANNUAL TAILINGS MANAGEMENT REVIEW
- TAILINGS MANAGEMENT SYSTEM
- OPERATION, MAINTENANCE AND SURVEILLANCE (OMS) MANUAL
- ASSIGNED ACCOUNTABILITY AND RESPONSIBILITY FOR TAILINGS MANAGEMENT



Biodiversity Conservation Management Assessment

- CORPORATE BIODIVERSITY CONSERVATION POLICY, ACCOUNTABILITY AND COMMUNICATIONS
- FACILITY-LEVEL BIODIVERSITY CONSERVATION PLANNING AND IMPLEMENTATION
- BIODIVERSITY CONSERVATION REPORTING



Energy Use and GHG Emissions Management Assessment

- ENERGY USE AND GHG EMISSIONS MANAGEMENT SYSTEMS
- ENERGY USE AND GHG EMISSIONS REPORTING SYSTEMS
- ENERGY AND GHG EMISSIONS PERFORMANCE TARGETS

