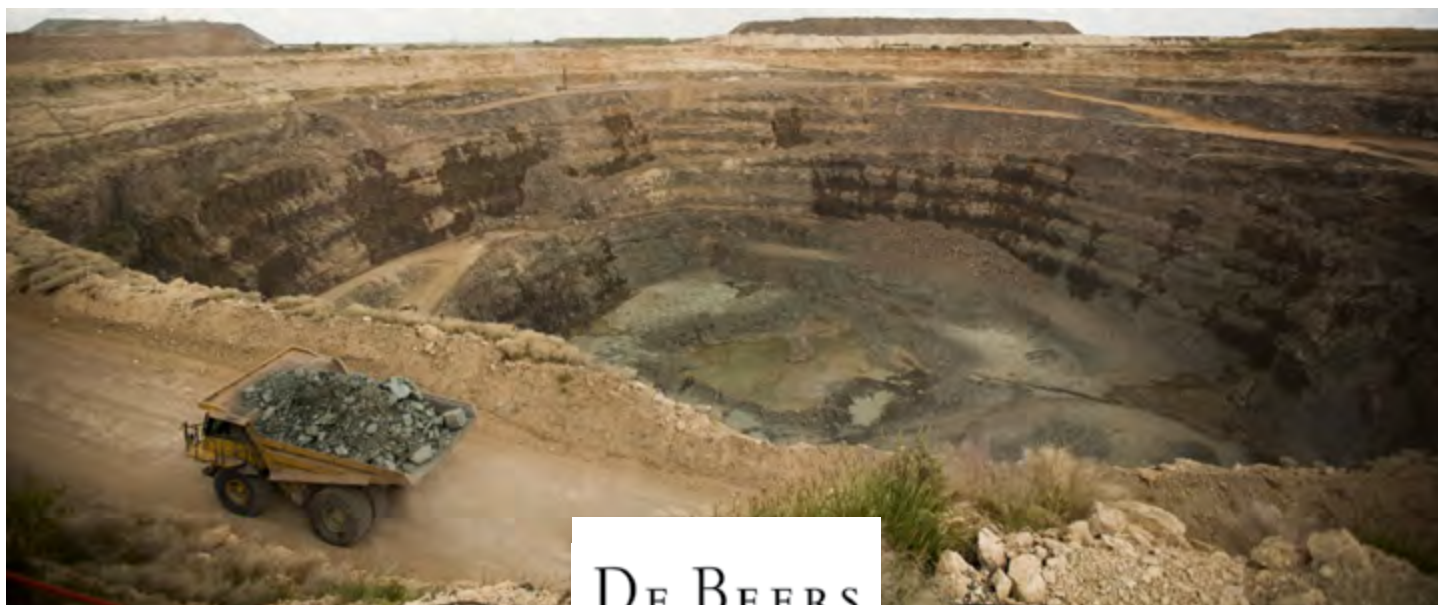


## TSM Performance by Company

### De Beers Canada Inc.



DE BEERS  
GROUP OF COMPANIES

De Beers has three major assets in Canada: the Victor Mine, the Snap Lake Mine and the Gahcho Kué Mine. The Victor Mine, Ontario's first and only diamond mine is located 90 kilometres west of the Attawapiskat First Nation in northeastern Ontario. The Snap Lake Mine, located approximately 200 kilometres northeast of Yellowknife in the Northwest Territories, was Canada's first fully underground diamond mine. In December 2015, the mine was placed into care and maintenance due to a downturn in market conditions. De Beers is also the majority partner and operator of the Gahcho Kué project, which began production on August 2, 2016. The site is located 280 kilometres northeast of Yellowknife.

De Beers' operations are committed to sustainable development. Gahcho Kué, Snap Lake and the Victor mines have a combined total of 14 Impact Benefit Agreements with First Nations and Metis communities in Canada. The operating mines, Gahcho Kué and Victor, maintain safety, health and environmental management systems that have been certified to OHSAS 18001 and ISO 14001.

De Beers is a member of the Canadian Diamond Code of Conduct and Jewelers Vigilance Canada. As part of the larger De Beers Group of Companies, De Beers Canada is also a supporter, participant or signatory of the Global Reporting Initiative, the Responsible Jeweler Council standards, the United Nations Global Compact, the Extractive Industries Transparency Initiative and the Kimberley Process.

The following is a summary of TSM results for De Beers Canada in 2015.

#### CRISIS MANAGEMENT PLANNING

Crisis management plans for the corporate office and the Victor and Snap Lake mines conform to all TSM performance requirements and Gahcho Kué's plan will in the near future.

#### ENERGY USE AND GHG EMISSIONS MANAGEMENT

The Victor Mine has a mature energy management system, with two out of three indicators assessed at Level AA.

The energy use and GHG emissions reporting system was assessed at Level A.





*De Beers' Victor Mine located in the James Bay Lowlands of Northern Ontario.*

The Snap Lake Mine's energy reporting system was assessed at Level A, with the other two indicators achieving a Level B. Vacancies in the engineering and maintenance department and ongoing changes to the mine's power generation system during the past two years have limited progress.

Gahcho Kué is in the process of developing an energy management system.

### TAILINGS MANAGEMENT

Victor and Snap Lake mines maintained either a Level AA or AAA for all of the Tailings Management performance indicators except Indicator 5 for Snap Lake, which was assessed at Level A. Both mines participated in the De Beers Group's annual tailings management assurance and review program. The Victor Mine also undertook a third-party audit of selected elements of its tailings management program.

### ABORIGINAL AND COMMUNITY OUTREACH

Both Victor and Snap Lake mines maintained either a Level AA or AAA for all of the Aboriginal and Community Outreach performance indicators.

### BIODIVERSITY CONSERVATION MANAGEMENT

Both Victor and Snap Lake mines improved and were assessed at Level A or above.

The Victor Mine has extensive environmental monitoring programs, which were already in place for various permits, environmental assessment follow-up programs and research initiatives. Improvements focused on increasing communication with communities of interest and making information publicly available about the mine's biodiversity conservation performance.

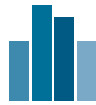
The Snap Lake Mine also has a comprehensive environmental monitoring program as required by various licences, permits and environmental assessment follow-up programs. Improvements focused on linking these programs to a Biodiversity Action Plan framework and documenting annual target setting and reporting systems.

### SAFETY AND HEALTH

The safety and health management systems at both Victor and Snap Lake mines are certified in 2015 to OHSAS 18001, and were self-assessed at Level AAA, except for one indicator at each mine, which was assessed at Level AA.

📄 For more information, please visit: [www.debeersgroup.com/canada/en](http://www.debeersgroup.com/canada/en)





2015 TSM Results

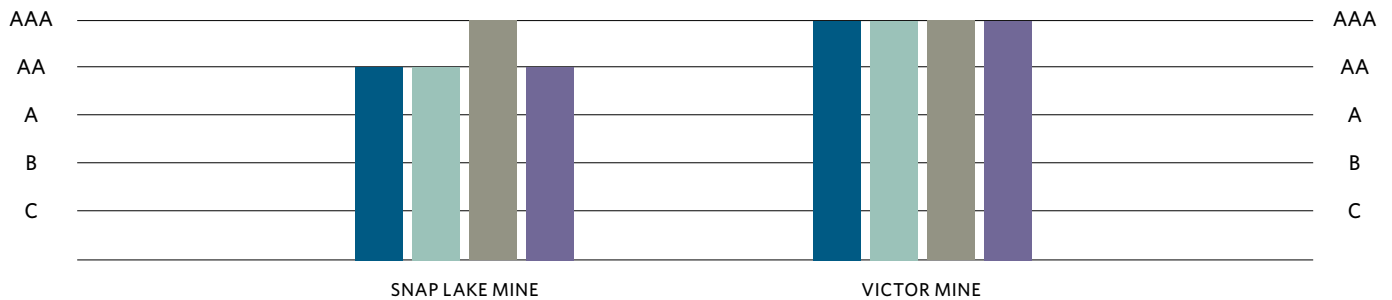
De Beers Canada Inc.

Crisis Management Planning Assessment

FACILITY	PREPAREDNESS	REVIEW	TRAINING
DE BEERS CANADA INC.	<input checked="" type="checkbox"/>	<input checked="" type="checkbox"/>	<input checked="" type="checkbox"/>
SNAP LAKE MINE	<input checked="" type="checkbox"/>	<input checked="" type="checkbox"/>	<input checked="" type="checkbox"/>
VICTOR MINE	<input checked="" type="checkbox"/>	<input checked="" type="checkbox"/>	<input checked="" type="checkbox"/>

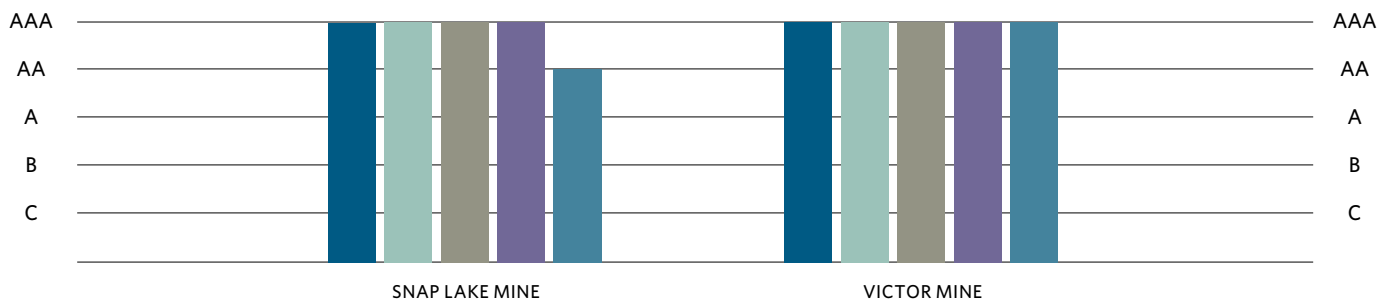
Aboriginal and Community Outreach Assessment

- COMMUNITY OF INTEREST (COI) IDENTIFICATION
- COI RESPONSE MECHANISM
- EFFECTIVE COI ENGAGEMENT AND DIALOGUE
- REPORTING



Safety and Health Assessment

- POLICY, COMMITMENT AND ACCOUNTABILITY
- TRAINING, BEHAVIOUR AND CULTURE
- PLANNING, IMPLEMENTATION AND OPERATION
- MONITORING AND REPORTING
- PERFORMANCE

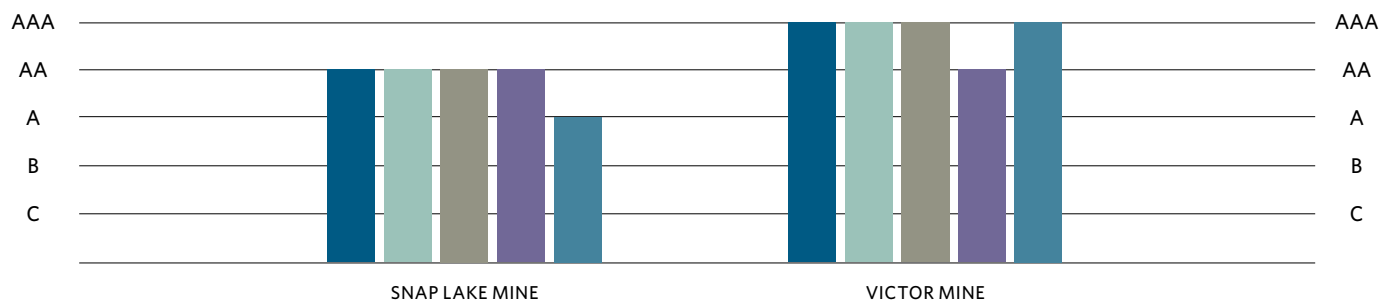


Self-assessed results; last external verification: 2014; next external verification: 2017.



## Tailings Management Assessment

- TAILINGS MANAGEMENT POLICY AND COMMITMENT
- TAILINGS MANAGEMENT SYSTEM
- ASSIGNED ACCOUNTABILITY AND RESPONSIBILITY FOR TAILINGS MANAGEMENT
- ANNUAL TAILINGS MANAGEMENT REVIEW
- OPERATION, MAINTENANCE AND SURVEILLANCE (OMS) MANUAL



## Biodiversity Conservation Management Assessment

- CORPORATE BIODIVERSITY CONSERVATION POLICY, ACCOUNTABILITY AND COMMUNICATIONS
- FACILITY-LEVEL BIODIVERSITY CONSERVATION PLANNING AND IMPLEMENTATION
- BIODIVERSITY CONSERVATION REPORTING



## Energy Use and GHG Emissions Management Assessment

- ENERGY USE AND GHG EMISSIONS MANAGEMENT SYSTEMS
- ENERGY USE AND GHG EMISSIONS REPORTING SYSTEMS
- ENERGY AND GHG EMISSIONS PERFORMANCE TARGETS



Self-assessed results; last external verification: 2014; next external verification: 2017.

