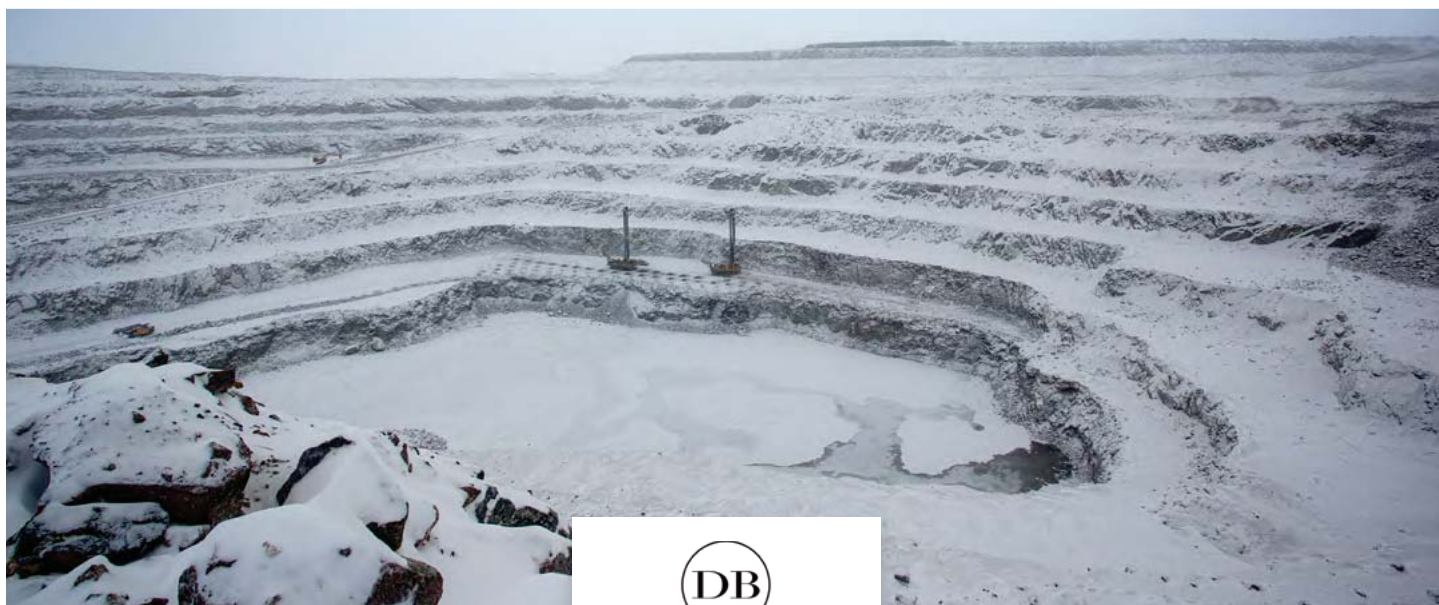


## TSM Performance by Company

### De Beers Canada Inc.

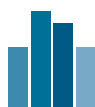


De Beers is a member of the Anglo American group. Established in 1888, De Beers is the world's leading diamond company with unrivalled expertise in the exploration, mining and marketing of diamonds. Together with its joint venture partners, De Beers employs more than 20,000 people (directly and as contractors) across the diamond pipeline, and is the world's largest diamond producer by value, with mining operations in Botswana, Canada, Namibia and South Africa.

As part of the company's operating philosophy, the people of De Beers are committed to *Living up to Diamonds* by making a lasting contribution to the communities in which they live and work, and transforming natural resources into shared national wealth.

De Beers has been operating in Canada since it carried out its first exploration programme in 1961. The De Beers Victor kimberlite cluster discovery in 1987 by De Beers Exploration was the first economic diamond discovery in Canada, four years before the discoveries in the Northwest Territories. De Beers currently operates the Victor Mine in northern Ontario and the Gahcho Kué Mine in the Northwest Territories. The Snap Lake Mine, Canada's first fully underground diamond mine, is currently in extended care and maintenance.

🔗 For more information, please visit [www.debeersgroup.com](http://www.debeersgroup.com)



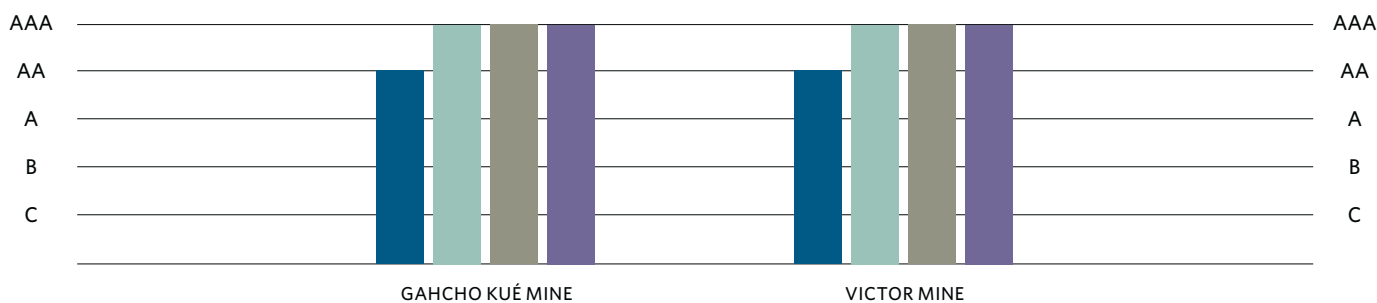
## 2017 TSM Results De Beers Canada Inc.

### Crisis Management and Communications Planning Assessment

FACILITY	PREPAREDNESS	REVIEW	TRAINING
CORPORATE	✓	✓	✓
GAHCHO KUÉ MINE	✓	✓	✓
VICTOR MINE	✓	✓	✓

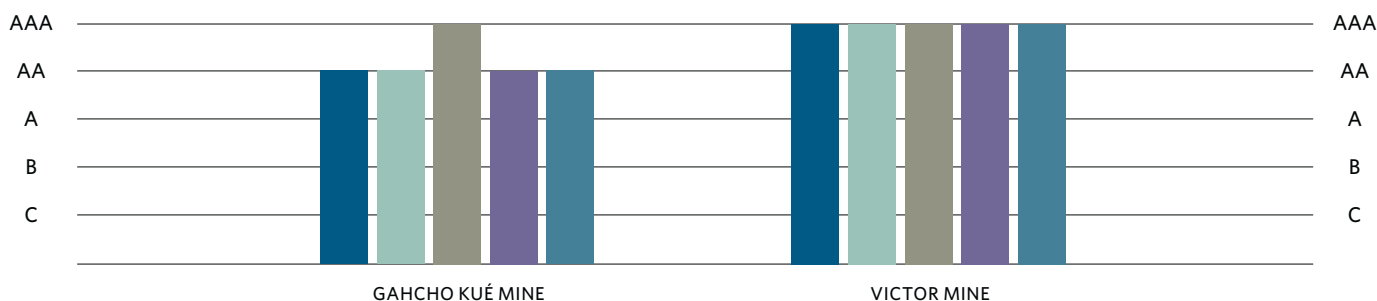
### Aboriginal and Community Outreach Assessment

- COMMUNITY OF INTEREST (COI) IDENTIFICATION
- COI RESPONSE MECHANISM
- EFFECTIVE COI ENGAGEMENT AND DIALOGUE
- REPORTING



### Safety and Health Assessment

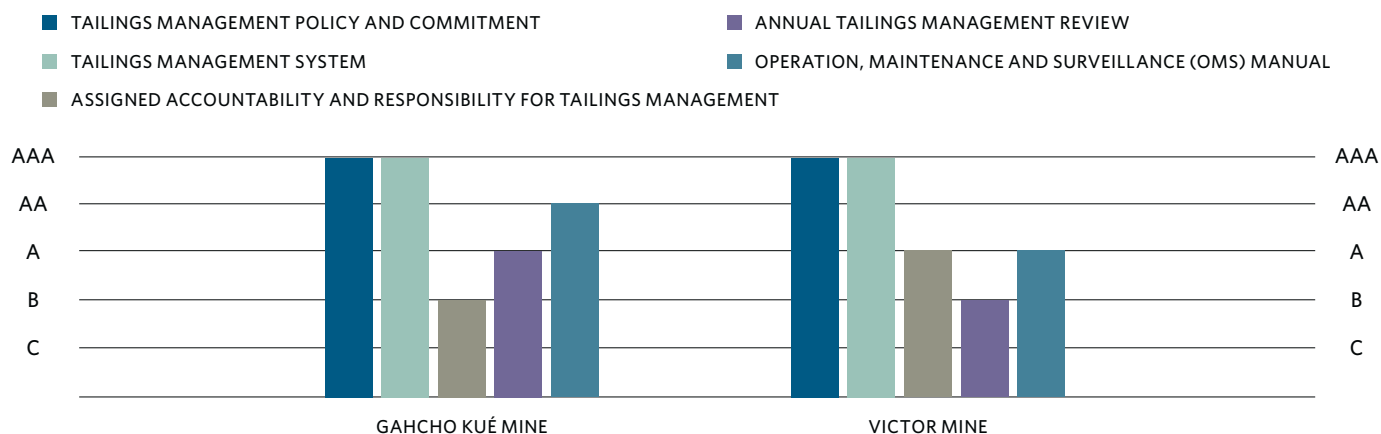
- COMMITMENTS AND ACCOUNTABILITY
- TRAINING, BEHAVIOUR AND CULTURE
- PLANNING AND IMPLEMENTATION
- MONITORING AND REPORTING
- PERFORMANCE



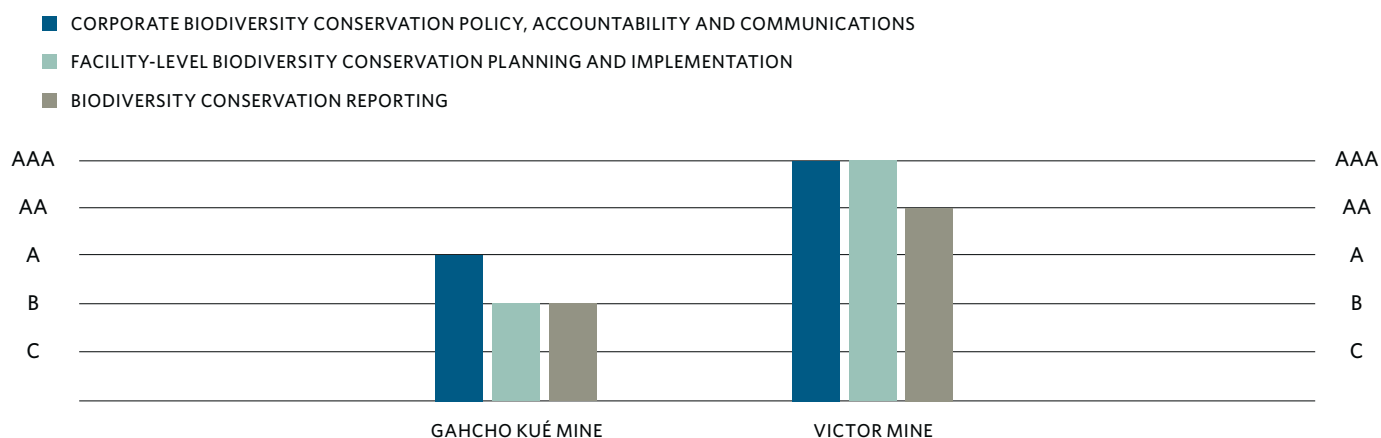
Self-assessed results; last external verification: 2017; next external verification: 2020.



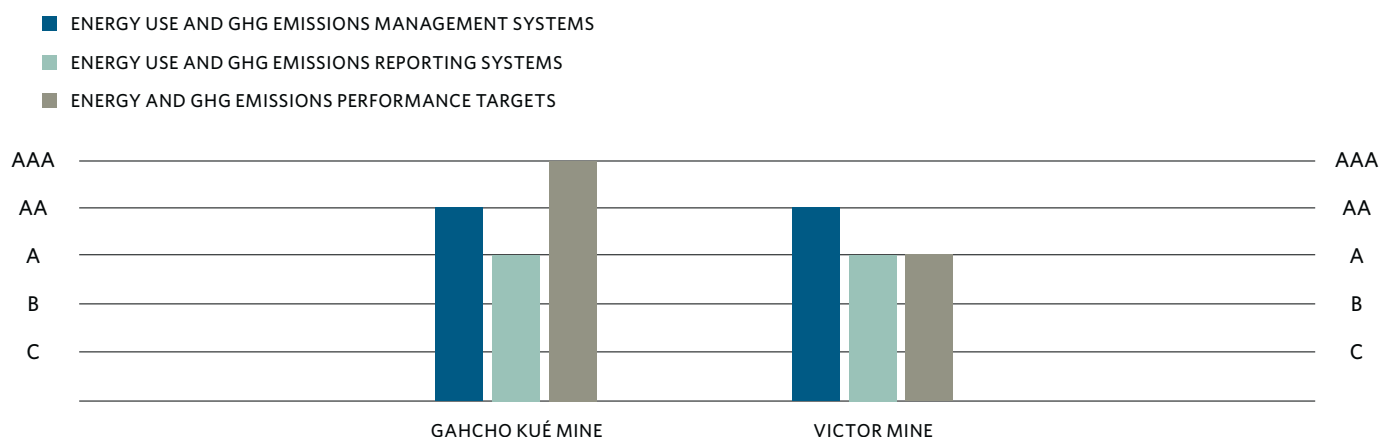
## Tailings Management Assessment



## Biodiversity Conservation Management Assessment



## Energy Use and GHG Emissions Management Assessment



Self-assessed results; last external verification: 2017; next external verification: 2020.

